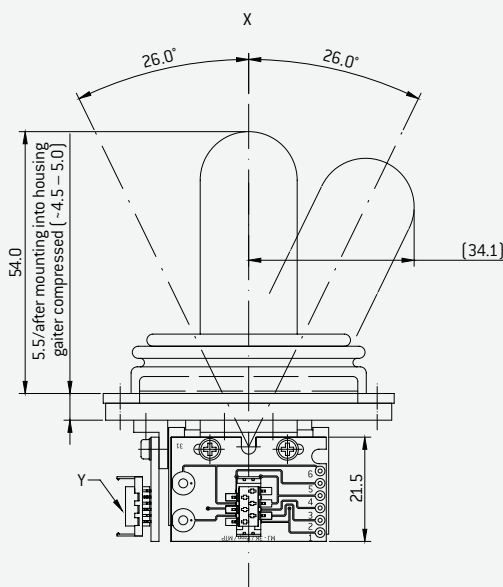


JOYSTICK MJ-3K BRS

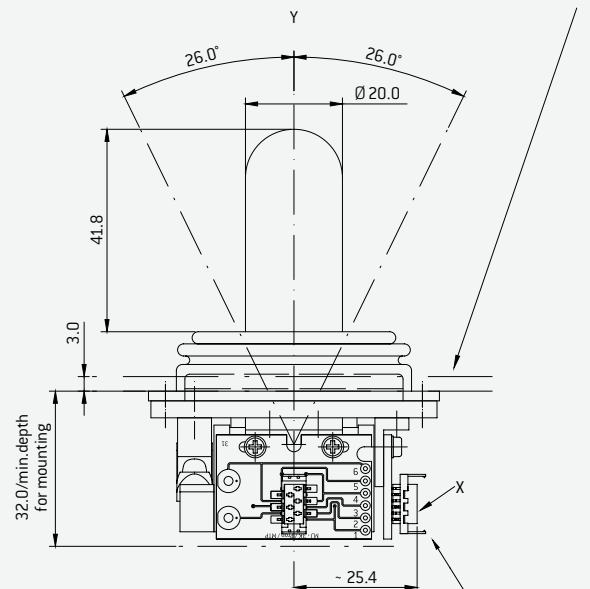


A modular system makes it possible to select from various mechanical designs according to customer requirements and combine this design with matching sensors. Please ask our team.

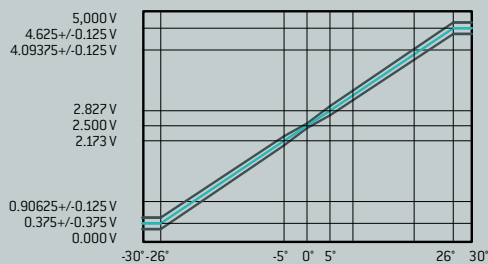
Special applications based on the standard product can also be quickly realised. The example below shows a MJ-3K joystick with friction brake "put 'n stay".



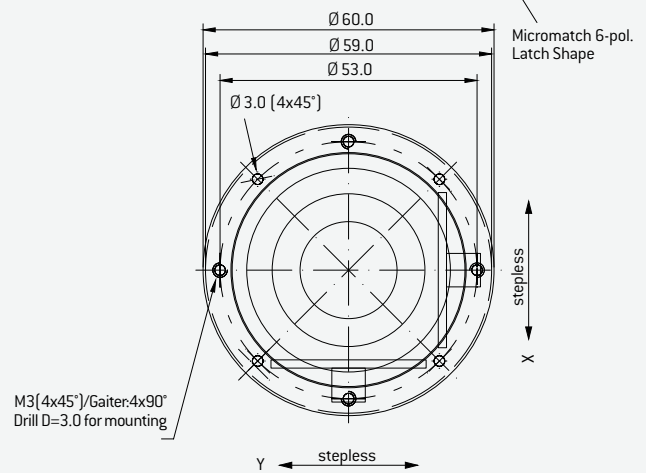
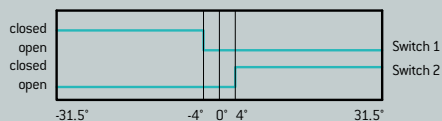
Assembly into Housing from Inside / Screw Head outside of housing
If thickness of mounting panel is 3mm: Use Screw M3x10mm / Center Hole D=49,0



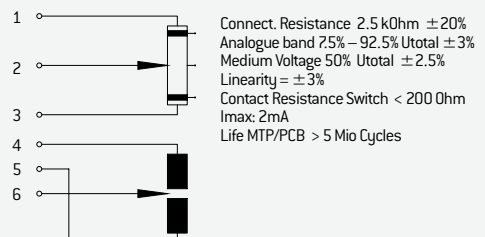
OUTPUT CHARACTERISTIC POTENTIOMETER



OUTPUT CHARACTERISTIC



CONNECTOR PIN ASSIGNMENT / DIAGRAM



MJ-3K BRS

Type MJ-3K 55 MTP xy: 2.5k 1-0-1 BRS 4x45° D=3.0 Micromatch 6-pin
Item number E060200472 (2-axis)

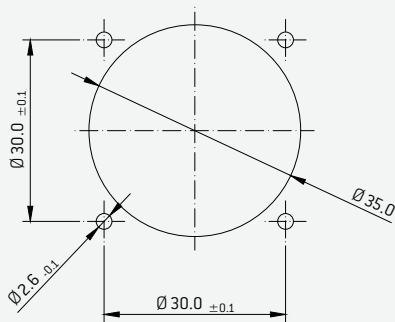
Type MJ-3K 55 MTP xy: 2.5k 1-0-1 3C BRS 4x45° D=3.0 Micromatch 6-pin
Item number E060200418 (2-axis)

MOUNTING HOLES FOR MJ-2K AND MJ-3K



Mounting, Technology and Options

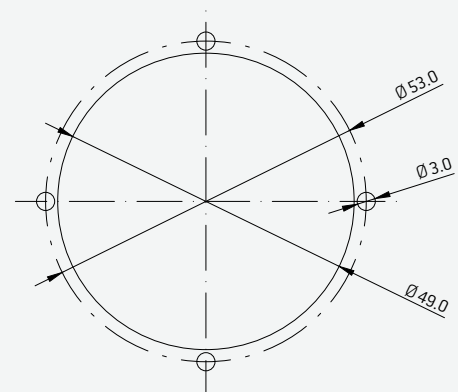
MOUNTING HOLE MJ-2K OM



Dimension Tolerance
DIN ISO 2768-m

If thickness of mounting panel/housing is 3mm thickness, following screw is to be used: Mounting Screw Type for example: M2,5x16 DIN7985 (4x) /H/Z/TX
Material: Steel galvanized/A2 (stainless). Length of screw has to be changed accordingly to mounting panel/housing thickness, to avoid damages to the gaiter!

MOUNTING HOLE MJ-3K



Dimension Tolerance
DIN ISO 2768-m

If thickness of mounting panel/housing is 3mm thickness, following screw is to be used: Mounting Screw Type for example: M3x10 DIN7985 (4x) /H/Z/TX
Material: Steel galvanized/A2 (stainless). Length of screw has to be changed accordingly to mounting panel/housing thickness.

KEY TECHNOLOGY / OPTIONS	SHORT FORM
Technology	
Conductive plastic	CP
Membrane sensor	MTP
Hall-Effect	Hall
Options	
Square platform	MJ-2K
Circular platform	MJ-3K
Grip height 55 [only MJ-3K]	55
Grip height 65 [only MJ-3K]	65
Center tap	MC
Dead man switch outside	DS series IB
Dead man switch (microswitch-inside)	DS
Cross gate	CG
Gaiter assembled from "outside" with respective mounting ring; IP 66	OM
Brake stepless – Put and Stay	BRS
Brake respective step – max. 2-0-2	BR 2-0-2
Circular deflection: 19,5°	3C
Soft control	SC
No guiding	NG